

DRAWING NUMBER
27-37

DRAWING NUMBER

DRAWING NUMBER

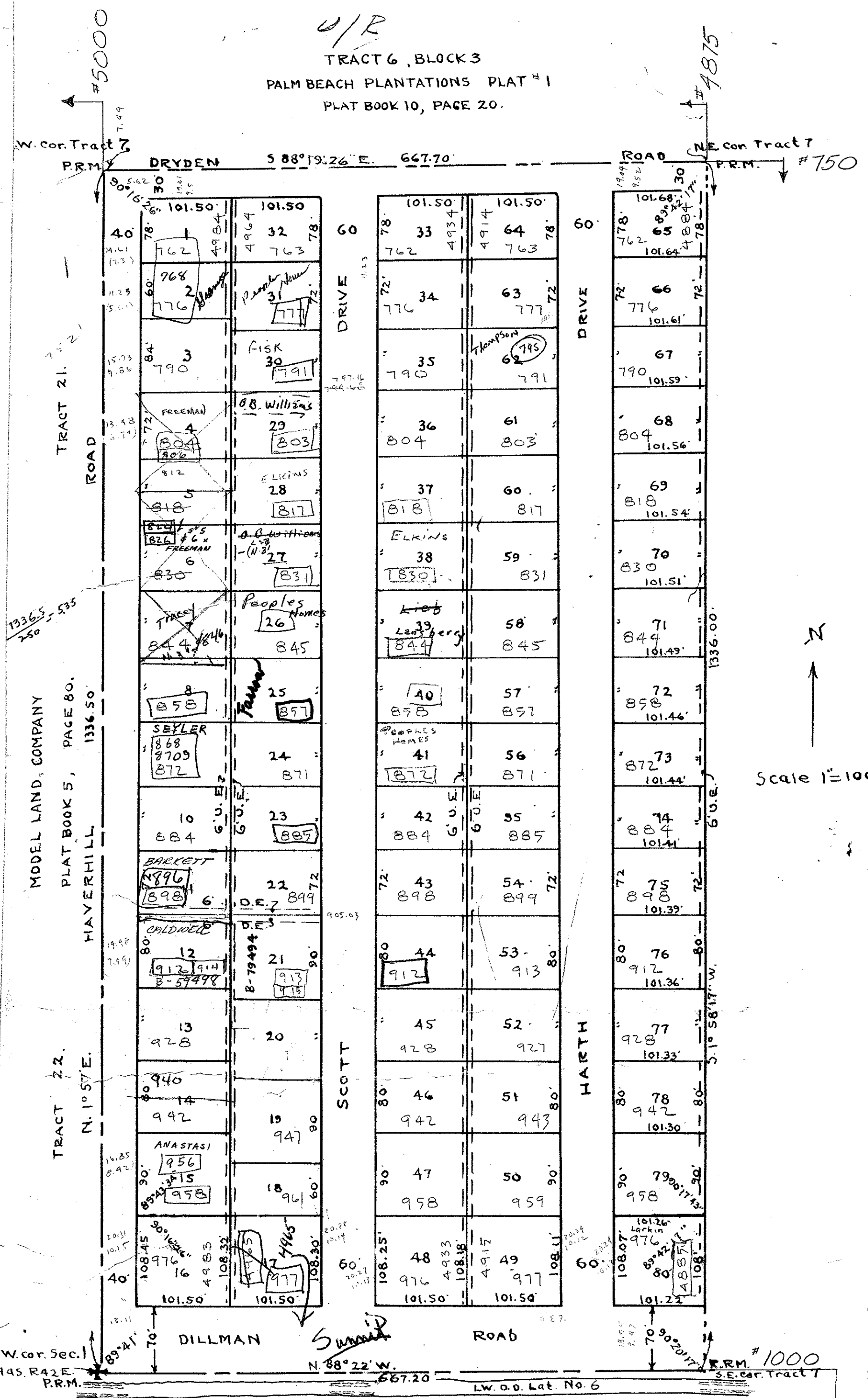
DRAWING NUMBER

DILLMAN HTS. #1

U/R
TRACT 6, BLOCK 3
PALM BEACH PLANTATIONS PLAT #1
PLAT BOOK 10, PAGE 20.

REPLAT OF
PLAT ONE
DILLMAN HEIGHTS
AS RECORDED IN P.B. 27 ON Pg. 30.
A SUBDIVISION OF TRACT 7, BLOCK 3 OF
PALM BEACH PLANTATIONS, (MODEL LAND CO)
PLAT No. 1, Sheet No. 1, in Sec. 1-44-42.

37
STATE OF FLORIDA
COUNTY OF PALM BEACH
1961
27
SEP 27
1961
J. ALEX. ARNOLD, Clerk of the Court
Bertha M. Kibben, D. C.



There shall not be any buildings on utility easements.
There shall not be any buildings or any kind of construction or planting of trees or shrubs on drainage easements.
Easements are for public utilities unless shown.
Building set-back lines shall be as required by the Palm Beach County Zoning Commission.

Scale 1"=100'
N
TRACT 8, BLOCK 3,
PALM BEACH PLANTATIONS, PLAT #1
PLAT BOOK 10, PAGE 20.

STATE OF FLORIDA }
COUNTY OF PALM BEACH }

I hereby certify that on this day personally appeared before me, an officer duly authorized to administer oaths and take acknowledgements, Sallie A. Harth and Sigrid Rogers, President and Secretary, respectively, of DOUBLE R-J RANCH, Inc., a Florida Corporation, to me well known and known to me to be the individuals described in, and who executed the foregoing dedication, and they acknowledged before me that they executed the same as such officers of said Corporation by and with the authority of the Board of Directors of said Corporation for the purposes therein expressed, and that their act and deed was the act and deed of said Corporation.
Witness my hand and official seal at West Palm Beach, County of Palm Beach, and State of Florida, this 2nd day of September, A.D. 1961.
My commission expires: 10-9-63

Robert C. Felt
Notary Public

667.7
667.2
- .5
= .25
667.2
667.45
- .25
= 5.34 (E-W)
1336.5
1336
- .5
= .5
1336
1336.35
- .35
= 5.34 (N-S)

DEDICATION

STATE OF FLORIDA }
COUNTY OF PALM BEACH }

Know all men by these presents that Palm Beach Building Specialties, Inc., and DOUBLE R-J RANCH, INC., both of West Palm Beach, Fla. are owners in fee simple (as shown by public records) of a tract of land shown on this plat and described as Plat One DILLMAN HEIGHTS as recorded in Plat Book 27, on Page 30, Public Records of Palm Beach County, Florida. All in Sec. 1, T.44S, R.42E, and by and with the authority of the Boards of Directors have caused the same to be surveyed and platted as shown hereon and have hereby dedicated to the perpetual use of the public highways, all Roads and Drives as shown hereon, also DILLMAN ROAD, and the owners also dedicate to the perpetual use of the public the easements shown hereon for the purposes as stated on this plat.

In witness whereof, the said corporations have caused these presents to be signed by their Presidents and attested by the Secretaries and the corporate seals affixed hereto by an with the authority of the Boards of Directors this 5th day of Sept. 1961.

DOUBLE R-J RANCH, Inc.
By: Clavin A. Harth
President.
Attest: Sigrid E. Rogers
Secretary.

Palm Beach Building Specialties, Inc.
By: Ray C. Stange
President
Attest: Robert K. Boyd
Secretary

ACKNOWLEDGEMENT

STATE OF FLORIDA }
COUNTY OF PALM BEACH }

I hereby certify that on this day personally appeared before me, an officer duly authorized to administer oaths and take acknowledgements, Roy E. George and Robert K. Boyd, President and Secretary, respectively, of Palm Beach Building Specialties, Inc. a Florida Corporation, to me well known and known to me to be the individuals described in, and who executed the foregoing dedication, and they acknowledged before me that they executed the same as such officers of said Corporation by and with the authority of the Board of Directors of said Corporation for the purposes therein expressed, and that their act and deed was the act and deed of said Corporation.
Witness my hand, and official seal at West Palm Beach, County of Palm Beach, and State of Florida, this 5th day of September, A.D. 1961.
My commission expires: 10-9-63.

Robert C. Felt
Notary Public

STATE OF FLORIDA }
COUNTY OF PALM BEACH }

I hereby certify that the plat shown hereon is a true and correct representation of a survey made by me and is accurate to the best of my knowledge and belief, and that permanent reference monuments (P.R.M.) have been set as required by law.

KARL RIDDLE
CERTIFICATE
No. 250
STATE OF FLORIDA
REGISTERED LAND SURVEYOR

Carl Riddle
Registered Land Surveyor
Fla. Cert. No. 250.

1000-275

Subscribed and sworn to before me this 31st day of August 1961
My commission expires: Jan. 16, 1964

Notary Public

27-37

Approved: September 15 A.D. 1961
Board of County Commissioners
By: Stephen M. Smith
County Engineer
By: Red Brundage
Chairman

DILLMAN HEIGHTS - PLAT #1

1/44/42